

Technical data sheet for

EC40M5 ON THE SK40A STAND

Full Size 5 Tray Manual / Electric Combi Oven on a Stainless Steel Stand



STANDARD FEATURES

- Electric direct steam version
- 5 x Full size steam pan capacity
- 2¾" / 70mm tray spacing
- Compact 32" / 812mm wide
- 7kW heating power
- Hand shower with fittings and connections included
- Electro-mechanical controls to set time, temperature and operation mode
- Temperature range 122-500°F / 50-260°C
- Manual timer range up to 120 minutes
- Selector for convection, steam and combi modes
- Door open rapid cool down function
- Manual cleaning system with externally-connected hand shower
- Autoreverse (automatic inversion of the direction of the fan) for perfectly uniform cooking
- Manual chamber venting
- LED chamber lighting
- Perfectly smooth cooking chamber walls with rounded edges
- Double-glazed door with thermo-reflective tempered glass
- Adjustable hinges for optimal door seal

ACCESSORIES

- Turbofan SK40A Oven Stand



EC40M5

Unit shall be a Moffat electrically heated Turbofan direct steam injection combination convection steam oven. The oven shall have a stainless steel oven chamber with 5 x Full Size Steam Pan, 7.5kW power rating and an auto-reversing direction fan. Oven door shall be vented safe touch and feature LED oven chamber lighting. Electro-mechanical controls shall provide Convection, Steam, and Combi cooking mode selection, door open rapid cool down function, temperature control 122-500°F, manual timer for up to 120 minutes, and a manual oven vent open/close switch. A water hand shower shall be included as standard. Oven shall be able to be bench mounted on 4" feet or mounted on Turbofan oven stand model SK40A. Unit shall be supplied in 100% recyclable shipping packaging.

SK40A

Unit shall be a Moffat Turbofan stainless steel oven stand. The stand shall be constructed from stainless steel tube with 4 adjustable feet. It shall be fitted with 6 tray runners suitable for full size steam pans. The stand shall be fully compatible with, and support, Turbofan Combi Oven models EC40M5, EC40M7, EC40D5 and EC40D7. Unit shall be supplied in 100% recyclable shipping packaging.

EC40M5 Full Size Manual/ Electric Combi Oven on a Stainless Steel Stand

Dimensions

| | |
|--------|---------------|
| Width | 32" / 812mm |
| Depth | 28½" / 725mm |
| Height | 31½" / 795mm |
| Weight | 163lbs / 74kg |

Packed Dimensions

| | |
|--------|-----------------|
| Width | 35⅞" / 910mm |
| Depth | 34" / 865mm |
| Height | 35½" / 900mm |
| Weight | 187lbs / 85kg |
| Volume | 25ft³ / 0.71 m³ |

Shelves

| | |
|-----------------------|------------|
| Full size steam pan 5 | |
| Shelf Spacings | 2¾" / 70mm |

Power connection requirements

Multi pole circuit breaker and all pole disconnection isolator switch installed near the appliance.

Electrical requirements

1-Phase and 3-Phase connection possible. Specify voltage when ordering.
 208V, 60Hz, 3-phase, 7.5kW, 21A/ph, or
 208V, 60Hz, 1-phase, 7.5kW, 36A
 240V, 60Hz, 3-phase, 7.5kW, 18A/ph, or
 240V, 60Hz, 1-phase, 7.5kW, 32A

Water connection requirements

Water Supply

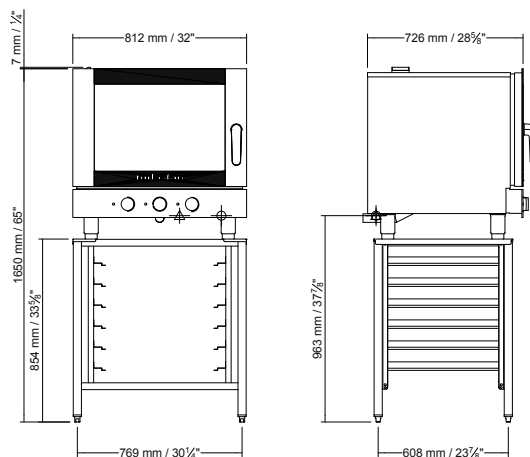
2 x ¾" GHT connections
 Cold Water
 Flow pressure 29-73 PSI / 200-500 kPa
 Shut off valve with back flow prevention

Water Quality

- total hardness 60-90 ppm
- pH > 7.5
- Cl-(chloride) <30 ppm
- temperature < 122°F / 50°C

Drain

- Funnel waste trap/tundish required
- 1½" dia. outlet
- Minimum fall/slope for waste 4°



SK40A Stainless Steel Stand

All stainless steel welded frame oven stand for Turbofan EC40 5 tray and 7 tray Series Combi ovens

6 position tray runners
 4 height adjustable feet
 Supplied CKD for assembly on site

External Dimensions (SK40A Oven Stand)

| | |
|--------|--------------|
| Width | 32" / 810mm |
| Height | 33⅝" / 854mm |
| Depth | 25⅝" / 650mm |

Nett Weight (SK40A Oven Stand)

42lbs / 19kg

Packing Data (SK40A Oven Stand)

48.5lbs / 22kg
 3.9ft³ / 0.11m³

| | |
|--------|--------------|
| Width | 32⅝" / 830mm |
| Height | 34⅝" / 880mm |
| Depth | 6⅜" / 160mm |

INSTALLATION CLEARANCES

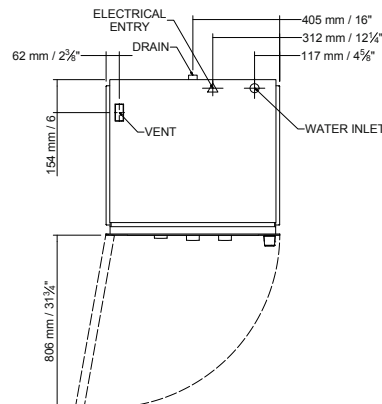
Installation requirements (for precise installation instructions, please refer to the unit's installation manual).

- rear 2" / 50mm
- right 2" / 50mm*
- left 2" / 50mm*

*For recessed installations a minimum of 20" / 500mm clearance must be maintained on one of the sides.

If heat sources are located near the Turbofan Combi, ensure that a minimum distance of 16" / 400mm is maintained.

Install in accordance with local body regulations only on horizontal surfaces and not against combustible walls.



www.moffatusa.com
 www.turbofanoven.com

U.S.A.

Moffat Inc
 3765 Champion Boulevard
 Winston-Salem
 North Carolina 27105
 Ph Toll Free 1-800-551 8795
 Ph 336-661 0257
 Fax 336-661 9546
 Email sales@moffat.com
 www.moffatusa.com

In line with policy to continually develop and improve its products, Moffat Limited reserves the right to change specifications and design without notice.



© Copyright Moffat Ltd
 U.S.T.N.C.S.1601